

BIRD WATCHING

By Kevin Murphy, Group Leader

The bird watching group consists of birdwatchers from those new to the hobby to those who have spent a number of years at it.

Every month we visit a different venue within Sussex, alternating local one month and further away the following month.

Locations vary allowing for breeding and migration.

Last month we visited Pett Levels just east of Hastings, where we saw 50 species including:

Greylag Goose, Mallard, Coot, Jackdaw, Magpie, Pied Wagtail, Shelduck, Mute Swan, Herring Gull, Little Grebe, Brent Goose, Curlew, Oystercatcher, Great Crested



Green Woodpecker



Buzzard



Little Egret



Shelduck

Grebe, Marsh Harrier, Meadow Pipit, Carrion Crow, Mediterranean Gull, Cormorant, Tufted Duck, Teal, Common Tern, Cetti's Warbler, Little Egret, Gadwall, Bearded Tit, Widgeon, Skylark, Grey Heron, Chiffchaff, Green Woodpecker, Blackbird, Great Tit, Kestrel, Lapwing, Egyptian Goose, Linnet, Buzzard and Moorhen.

There were also some small waders – Sanderling maybe – very black and white when viewed from above the spread wings.

I hasten to add this was a GOOD day. I can't predict or lay on such things. We are very much dependent on the weather.

For more information, message Kevin Murphy from the Groups pages after logging in to the Lewes u3a website.



Curlew



Lapwing



Chiff Chaff



Bearded Tit



GRACE EDGAR, GROUP LEADER WITH ANDREW EDGAR OF THE POPULAR

DOWSING GROUP BRIEFLY DESCRIBES ONE OF THE GROUP'S SUMMER ACTIVITIES.

In 2024, from June to August, Lewes Dowsers Group completed our Lewes project.

The objective was to identify the major Earth Energy Lines that currently affect Lewes. Dowsers traditionally dowsed for Water, but the concept of Earth Energies became popular since 1960s – they are streams of invisible Energy flowing through the landscape and can be discovered with dowsing rods or pendulum; they're usually positive and beneficial to all.

Unexpected results



We had some unexpected results. Why do the Lines in Lewes avoid

historic events, apart from the Battle of Lewes? What comes to mind, is that what is important for people, may not necessarily be important for the Energy Lines. Especially, if the Lines were old or ancient, and present before Lewes was built. Killing thousands in the Battle of Lewes and treating hundreds of victims of disease and injury in hospitals, would arguably have a greater effect than deaths of 17 Protestant Martyrs (not to undermine their suffering and importance). So maybe the Lines give

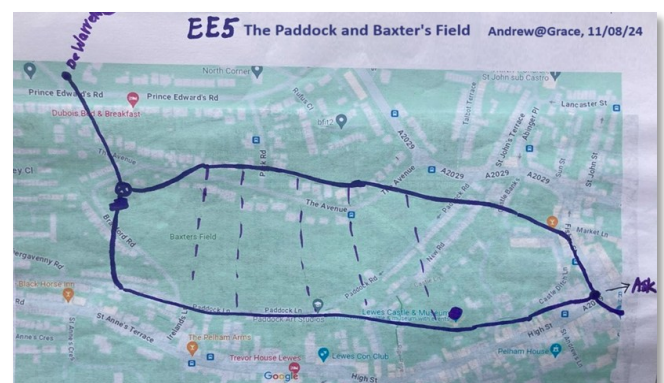
us a sense of scale.

Healing

Additionally, there is a concept of Healing the Energy Lines – so the Lewes Procession, which carried on for at least 200 years, remembering and honouring the Martyrs, may have dissipated the negative Energy connected to this event.

Definitely female

An interesting phenomenon was observed that the 6 Lines – 5 of them were definitely female – avoid prominent Yang features, such as war monuments, or churches – Christian churches are the product of male culture. Gary Biltcliffe and Caroline Hoare (The Spine of Albion) have found a similar result as the Elen Line tries to avoid the Earl of Yarborough Monument on the Isle of Wight.



Line EE5 – Earth Energy Lines split across The Paddock and Baxter's Field creating a positive Energy field.

To learn more, join future projects, or just have a chat, contact the Group Leaders of the Dowsing Group through the Group Page on www.Lewesu3a.uk

The Third Age Trust

Essay Competition

2025

Submit an essay (max 1,000 words) championing a person, policy, invention or idea that has positively shaped society.

Who Can Enter?

All u3a members, including those in Interest Groups Online. You must be a member by 1 March 2025 and stay a member until winners are announced in June 2025.

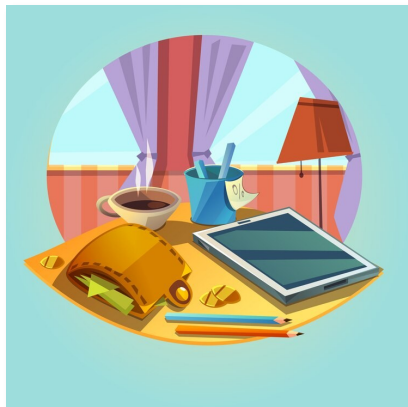
Key Details:

- Free entry (one essay per person)
Deadline: Submit by 12 noon, Friday 9 May 2025
- First prize – £100 Lifestyle shopping voucher donated by the creators of Friends Extra.
- Two runners-up – prize books donated by Bloomsbury.

For entry requirements and to submit your essay, go to www.u3a.org.uk/?view=article&id=2164&catid=201

(or under the 'Learn' then 'Learning Activities' tabs on the u3a.org website).

And don't forget—if you have success in this competition, Bulletin wants to hear about it!



SCIENCE MATTERS

One of the Group Leaders, Gordon Bull, outlines what happens within the group.

We are a group of around 40 people with a background or interest in science.

Most of the topics we discuss are phrased as questions. Examples of the topics we have covered recently include:

Should airlines bring back supersonic



aircraft? Where is the human race going? Lies, damned lies and statistics. Are we recycling enough to save the planet? How do we counter disinformation in the digital world? Saving endangered species.

We visit places of scientific interest such as the Newhaven Incinerator, the solar farm at Ardingly and the recycling centre in Brighton.

The group is currently full, but please contact the Group Leaders –via the Lewes u3a website after logging in– if you wish to join their waiting list.



These pictures show members of the ***Recorder Group*** giving a recital at the Lewes Area Visually Impaired Support Group in Ringmer last month. Bulletin welcomes pictures of group activities which we can use for publicity purposes such as flyers, our website and Bulletin.

One of these pictures will shortly be appearing on our website.



If you have a picture illustrating your group's activities, please email it to Bulletin. However, it is important to have the permission of the individual subjects if they are clearly recognisable.



VACANCY: ACCOMMODATION OFFICER/S



If you love a spreadsheet, enjoy liaising with people and visiting buildings, then you would enjoy the role of Accommodation Officer within Lewes u3a. This person would be responsible for sourcing and booking meeting rooms for our group meetings.

The responsibility can be shared

with one or more people, but we would ask that one person sits on, and reports to, the committee.

The prospective officer would get plenty of support from the committee, and can 'shadow' the existing accommodation officer before she steps down from her role in November.

Email Anne Williams at accommodation@lewesu3a.uk for further information.

Enquiries, comments or suggestions to: Bulletin@Lewesu3a.uk